

WINDOW PLUGS - REMOVAL/INSTALLATION

1. General

- A. Optional window plugs are available on the Model 208 cargo version beginning with Airplanes 20800114 and On, to block-out and protect the seven passenger windows and three windows installed in the cargo door and passenger air-stair door. The window plugs are equipped with a handle (strap assembly) to facilitate clipping the plugs in place. The textured surface of the plug (opposite side of the handle) faces outboard and the plugs are retained in place by three spring clips on each window.

2. Window Plug Removal/Installation

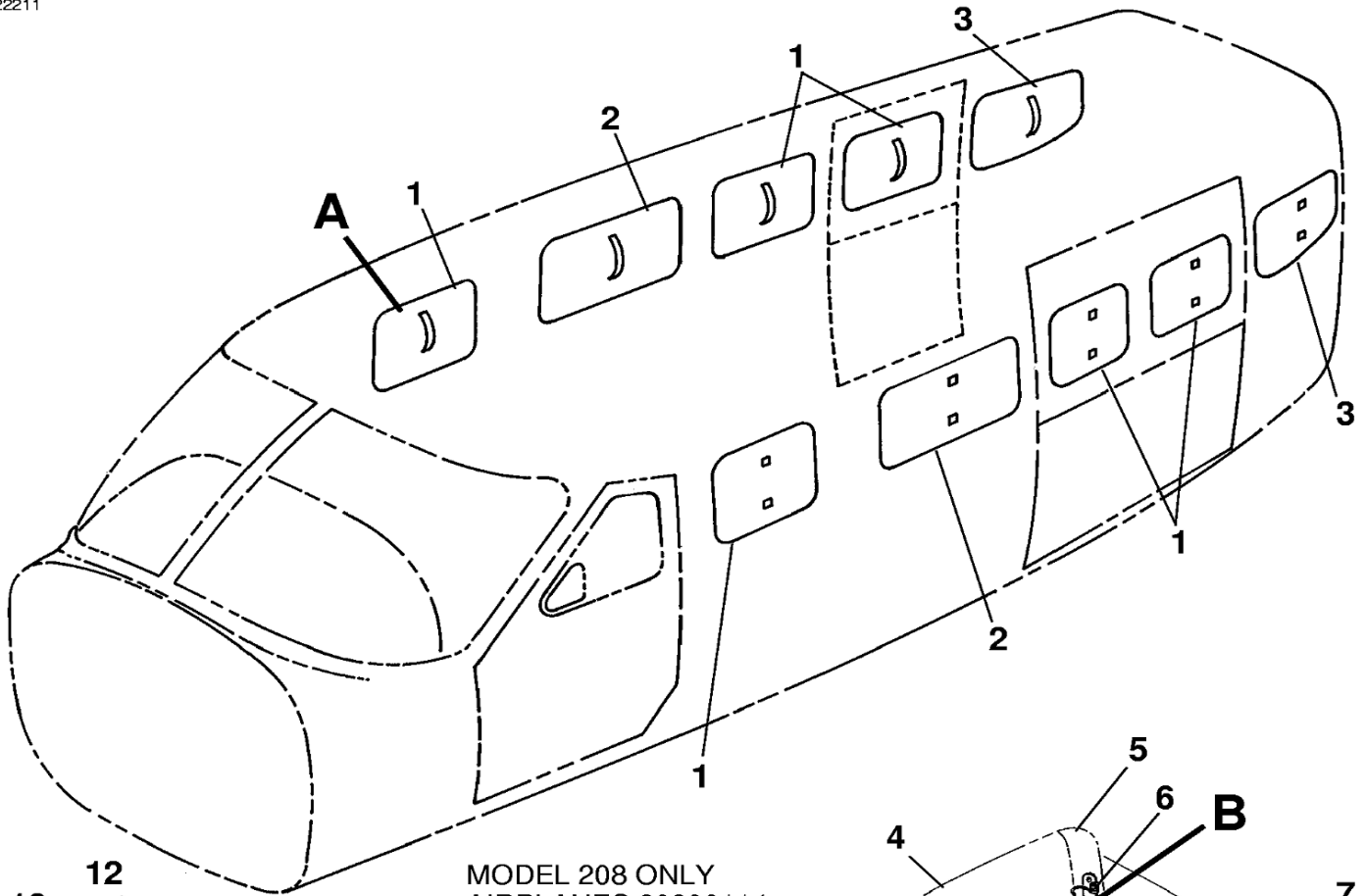
- A. Remove Window Plugs (Refer to Figure 401).
 - (1) Grasp the window plug (7) by the strap assembly handle (9) and slip the plug from under the three retaining spring clips (6) which are attached to the window trim molding.
- B. Install Window Plugs (Refer to Figure 401).
 - (1) Grasp the window plug (7) by the strap assembly handle (9) and slip the plug under the three spring clips (6) one at a time while holding the spring clips open one at a time.
 - (2) Ensure the window plug (7) is properly positioned on the window and the felt trim line is symmetrically aligned with the window trim molding (5). Spring clips (6) should fasten over the reinforcement strips (8) on the window plug assembly (7).

3. Spring Clip Removal/Installation

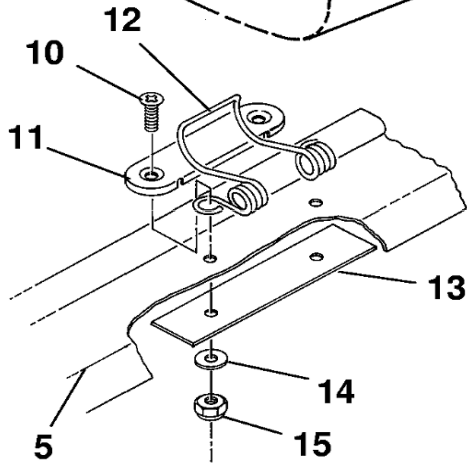
- A. Remove Spring Clip (Refer to Figure 401).
 - (1) Remove and retain nut (15), washer (14) and screw (10). The cover (11), spring clip (12) and stiffener (13) will be free for removal/ Retain all good parts for reinstallation.
- B. Install Spring Clip (Refer to Figure 401).
 - (1) Align cover (11), spring clip (12) and stiffener (13) with two mounting holes in the window trim molding (5) and attach securely with screw (10), washer (14) and nut (15).

Figure 401 : Sheet 1 : Passenger Window Plug Installation

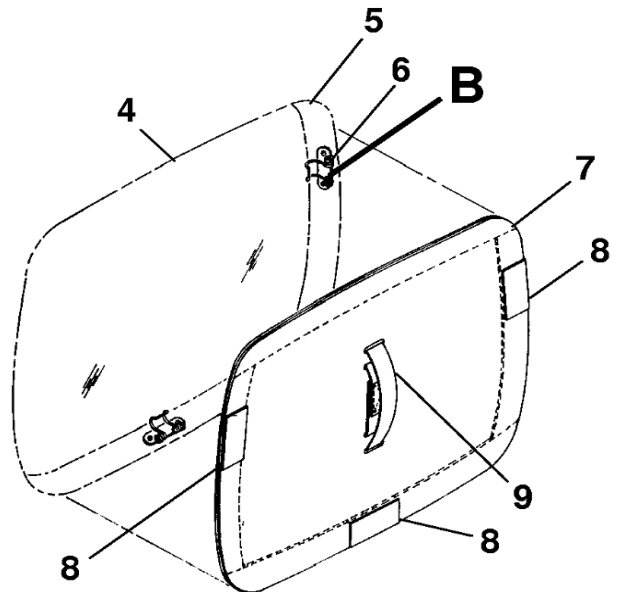
A22211



MODEL 208 ONLY
AIRPLANES 20800114
AND ON



DETAIL B
(TYPICAL 30 PLACES)



DETAIL A
(TYPICAL 10 PLACES)

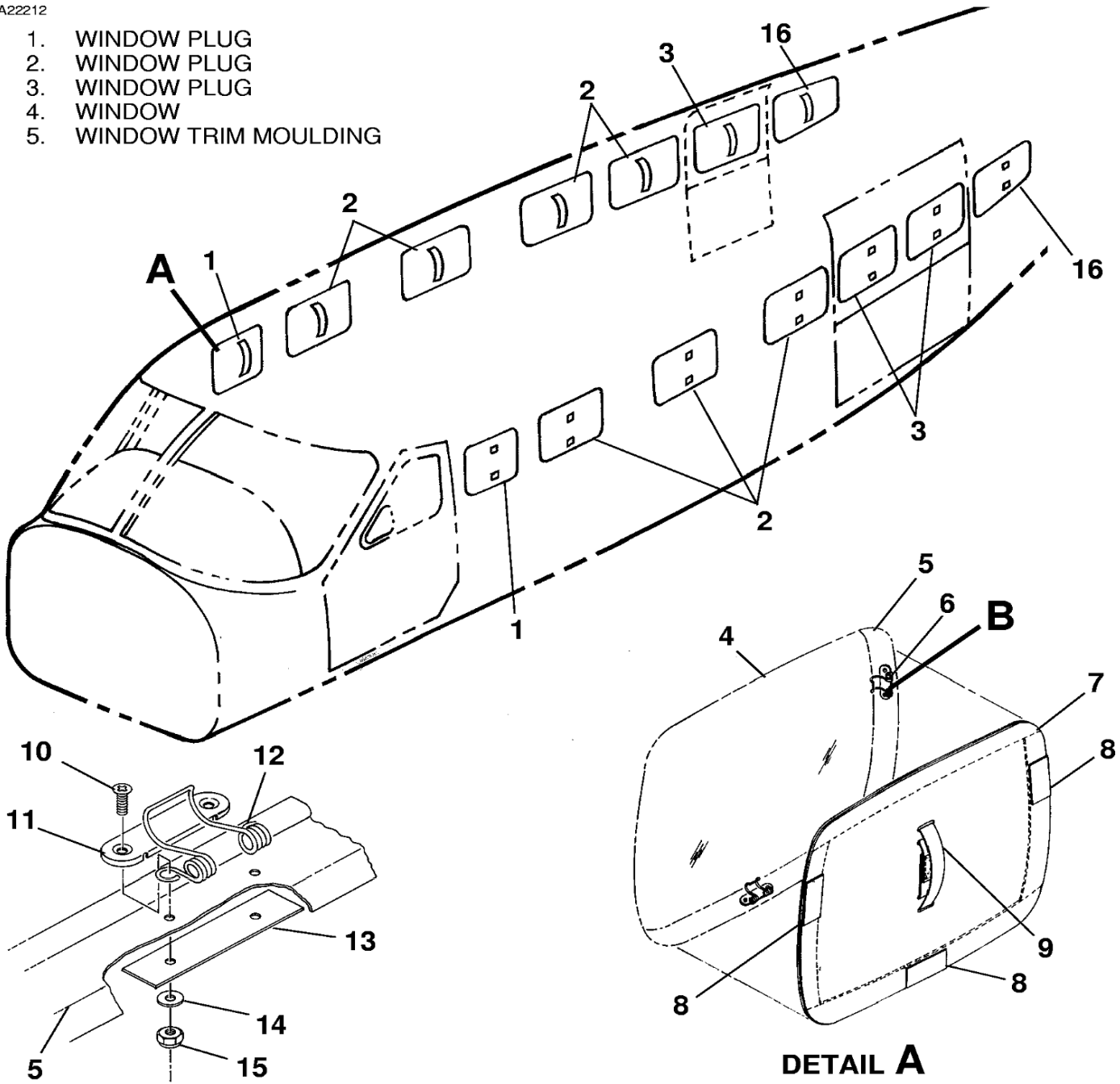
- | | | |
|-------------------------|------------------------|-----------------|
| 1. WINDOW PLUG | 6. SPRING CLIP | 11. COVER |
| 2. WINDOW PLUG | 7. WINDOW PLUG | 12. SPRING CLIP |
| 3. WINDOW PLUG | 8. REINFORCEMENT STRIP | 13. STIFFENER |
| 4. WINDOW | 9. STRAP | 14. WASHER |
| 5. WINDOW TRIM MOULDING | 10. SCREW | 15. NUT |

26142028
A26142029
B26141058

Figure 401 : Sheet 2 : Passenger Window Plug Installation

A22212

- 1. WINDOW PLUG
- 2. WINDOW PLUG
- 3. WINDOW PLUG
- 4. WINDOW
- 5. WINDOW TRIM MOULDING



DETAIL B
(TYPICAL 42 PLACES)

DETAIL A
(TYPICAL 14 PLACES)

- 6. SPRING CLIP
- 7. WINDOW PLUG
- 8. REINFORCEMENT STRIP
- 9. STRAP
- 10. SCREW
- 11. COVER
- 12. SPRING CLIP
- 13. STIFFENER
- 14. WASHER
- 15. NUT
- 16. WINDOW PLUG

MODEL 208B PASSENGER ONLY

2611M2006A
A26142029
B26141058